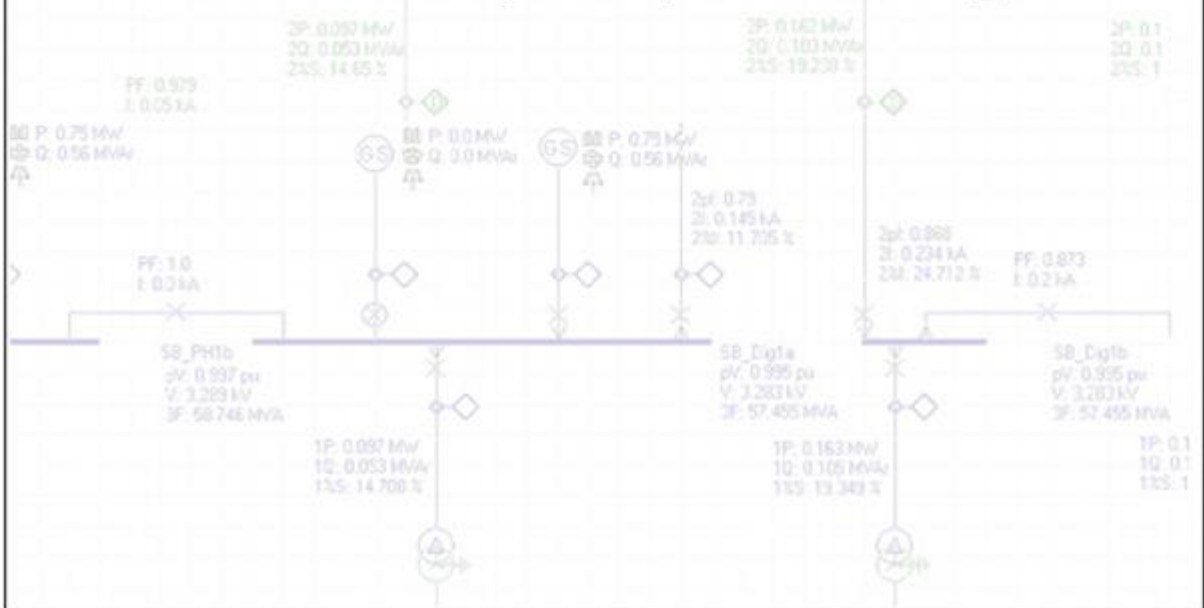




Electrical Power Systems Analysis Software

Innovation in Power Systems Analysis Software Technology



Date of Issue	Reference Number	Description
May 2013	66/04679/WebManual/0001	First Edition
June 2017	66/04679/WebManual/0002	Second Edition
January 2018	66/04679/WebManual/0003	Third Edition
August 2018	66/04679/WebManual/0004	Fourth Edition

Copyright © 1988 - 2018 RINA Consulting Ltd. All rights reserved.

No part of this document may be photocopied or otherwise reproduced without the prior permission in writing of RINA Consulting Ltd. Such written permission must also be obtained before any part of this document is stored in an electronic system of whatever nature.

RINA Consulting Ltd
Cleeve Road
Leatherhead
Surrey
KT22 7SA
UK
Tel : +44 (0) 1372 367345
E-mail: infoLH@rina.org

Read more about RINA on our Internet page at: <https://www.rina.org>

Contents

1.	Introducing the ERACS Web Access security solution	1
1.1	What is the ERACS Web Access security solution?	1
1.2	What are the hardware/software requirements?	1
1.3	How does it work?	1
2.	Configuring ERACS to use the Web Access security solution	2
2.1	New ERACS Installations	2
2.2	Existing ERACS Installations	3
3.	Using ERACS via the Web Access security solution	4
3.1	Logging into ERACS using a Web User Licence	4
3.2	Unlocking a Web User Licence	4
4.	Managing multiple ERACS Web User Licences	5
4.1	What is the ERACS Web Access Manager (EWAM)?	5
4.2	How do I access it?	5
4.3	Logging into EWAM	6
4.4	Viewing Web User Licences	7
4.5	Editing a Web User Licence	8
4.6	Unlocking an individual Web User Licence	9
4.7	Unlocking all Web User Licences	10
4.8	Viewing Usage Statistics	10

Figures List

Figure 1: ERACS Security Key Configuration window	2
Figure 2: ERACS Options window	3
Figure 3: ERACS Login window	4
Figure 4: ERACS Unlock Web User Licence menu item.....	4
Figure 5: EWAM Login page.....	5
Figure 6: EWAM Program Sets page.....	6
Figure 8: Editing a Web User Licence account.....	8
Figure 9: Unlock a Web User Licence option	9
Figure 10: Unlock All Web User Licences option	10

Abbreviations List

HTTP	HyperText Transfer Protocol
CD	Compact Disc
EWAM	ERACS Web Access Manager

1. Introducing the ERACS Web Access security solution

1.1 What is the ERACS Web Access security solution?

The ERACS Web Access security solution is a software-based alternative to the traditional hardware security keys employed by ERACS to prevent unauthorised use of the software. This facility enables ERACS to obtain its licence from our ERACS Web Server via the Internet.

1.2 What are the hardware/software requirements?

In order to make use of the ERACS Web Access security solution, the following items are required:

- An installation of ERACS
- An Internet connection and stable Internet access
- A firewall exception for ERACS.exe

1.3 How does it work?

The ERACS Web Access facility uses remote procedure calls to communicate with our ERACS Web Server. ERACS initiates an HTTP request to establish a connection to the ERACS Web Server. If a proxy server is being utilised for company Internet traffic, the proxy server settings will be automatically detected and the HTTP request will be made via the proxy server. Otherwise, a direct Internet connection is assumed.

The ERACS Web Server waits for an HTTP request to arrive. Upon receiving the request, the ERACS Web Server processes it and sends an appropriate HTTP response back to ERACS. Authorisation to use ERACS is granted via this request/response communication between ERACS and the ERACS Web Server. This communication occurs at regular time intervals.

Sometimes, ERACS is unable to communicate with the ERACS Web Server and we have found that this is normally due to firewall restrictions, where ERACS is prevented from communicating with the external ERACS Web Server. In order to enable ERACS to access our Web Server, ERACS must be included in the list of firewall exceptions.

All ERACS communications with the ERACS Web Server are transmitted using the HTTP Secure (HTTPS) protocol, which ensures data is encrypted and therefore protected against eavesdropping and tampering.

2. Configuring ERACS to use the Web Access security solution

2.1 New ERACS Installations

After selecting the "Install ERACS" option from the ERACS CD Browser (which should automatically appear on inserting an ERACS CD, or can be manually launched by opening <CD-drive>:\autorun.exe), ERACS will be installed. Subsequently, the Security Key Configuration window should automatically appear, as in Figure 1.

From the Security Key Configuration window:

- Select the "Web Access" option
- Click the OK button



Figure 1: ERACS Security Key Configuration window

2.2 Existing ERACS Installations

From *ERACS*:

- From the "Tools" menu, select the "Program Options..." menu item to launch the Options window, as in Figure 2.
- From the Options window, select the "Security" tab
- Select the "Web Access" option
- Click the OK button

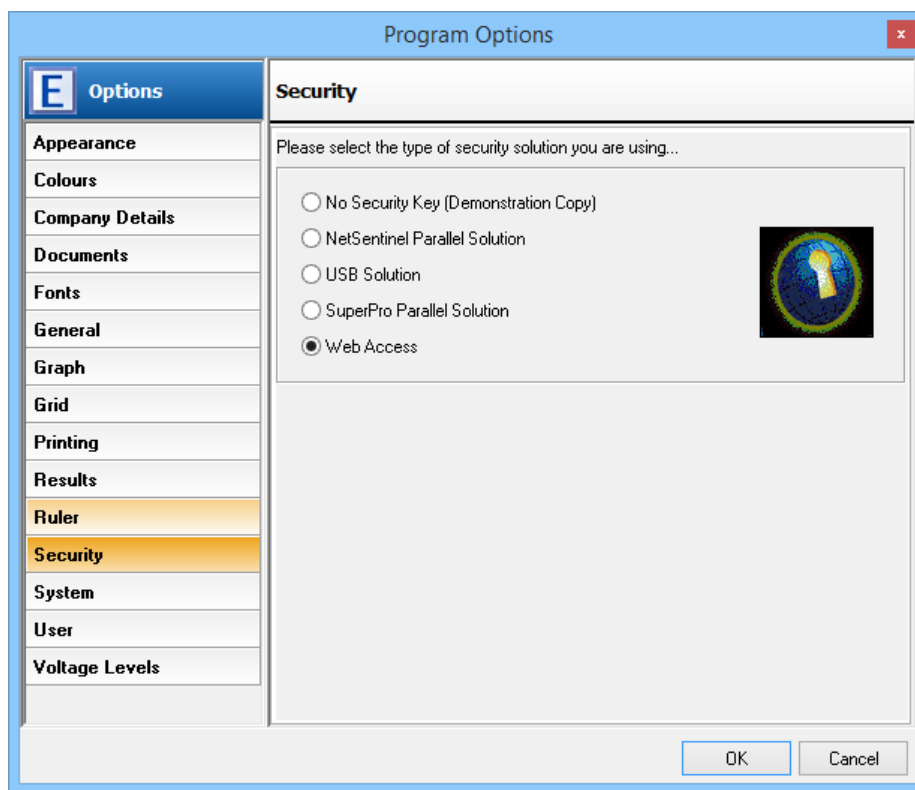


Figure 2: ERACS Options window

Alternatively, from Windows Explorer/My Computer:

- Navigate to the ERACS installation folder (typically C:\Program Files\ERACS\)
- Open the "Utils" subfolder
- Launch the "DongleConfig.exe" application and the Security Key Configuration window should appear, as in Figure 1.
- Select the "Web Access" option
- Click the OK button

3. Using ERACS via the Web Access security solution

3.1 Logging into ERACS using a Web User Licence

Having configured ERACS to use the Web Access security solution, a login prompt will be presented to the user when launching ERACS, as in Figure 3. The login credentials supplied by the ERACS Team should be entered in the "Username" and "Password" fields, before clicking the "Login" button to initiate a session with the ERACS Web Server. If the ERACS Web Server recognises the login credentials as valid, appropriate permission will be granted to use the ERACS facilities associated with that particular web user licence.



Figure 3: ERACS Login window

3.2 Unlocking a Web User Licence

If you wish to employ your Web User Licence on a different computer (on which ERACS is installed), you will need to select "Unlock Web User Licence" from the Tools menu within ERACS instead of exiting ERACS normally. Alternatively, you can configure the licence to be automatically unlocked each time ERACS is closed (see section 4.5 for further information).

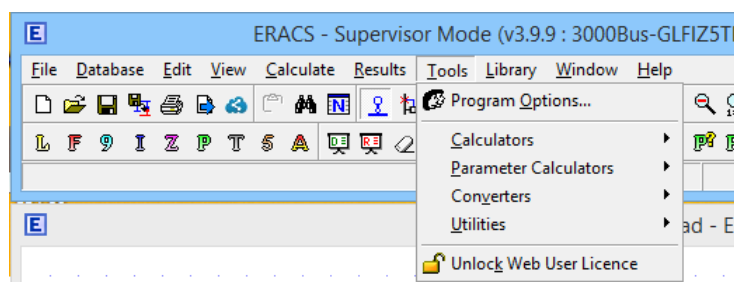


Figure 4: ERACS Unlock Web User Licence menu item

4. Managing multiple ERACS Web User Licences

4.1 What is the ERACS Web Access Manager (EWAM)?

The ERACS Web Access Manager (EWAM) is a dedicated web-based application for managing ERACS Web User Licences. EWAM enables you to:

- View all Web User Licences available to your company/institution (including information such as "Date Last Used", "Licence Locked to a PC" and "Licence in Use") – see section 4.4 for more information.
- Edit individual web user licence information (such as Username, Password and Access Level) – see section 4.5 for more information.
- Unlock individual Web User Licences – see section 4.6 for more information.
- Unlock all Web User Licences simultaneously – see section 4.7 for more information.
- View usage statistics – see section 4.8 for more information.

4.2 How do I access it?

Using a web browser (such as Internet Explorer), enter the following address in the address bar: <https://ewam.eracs.co.uk/> and the EWAM Login page will be displayed, as in Figure 5.

The screenshot shows the EWAM login interface. At the top left is the RINA ERACS logo. To the right is a navigation menu with links: Home, Demo Software, News, Downloads, Services, Contacts, and Login. Below the navigation is a dark banner with the text 'EWAM - ERACS Web Access Manager' and 'Review your web licences & program sets.' A small blue button labeled 'ERACS Web Access Security Solution Guide' is in the top right of the banner. The main content area contains a login form with the following elements: a 'Login' header, an 'E-Mail Address or Username' input field, a 'Password' input field, a 'Remember Me' checkbox, a blue 'Login' button, and a 'Forgot Your Password?' link.

Figure 5: EWAM Login page

4.3 Logging into EWAM

When the ERACS Team have authorised you to use EWAM, you will receive an email containing EWAM login credentials. Those credentials can be entered in the "Username" and "Password" fields of the EWAM Login page (Figure 5), before clicking the "Login" button. If the login credentials are recognised as valid, the program sets associated with your account will be displayed, as in Figure 6.

The screenshot shows the EWAM - ERACS Web Access Manager interface. At the top, there is a navigation menu with links for Home, Demo Software, News, Downloads, Services, Contacts, and ERACS Staff. Below the navigation is a banner for 'EWAM - ERACS Web Access Manager' with a sub-header 'Review your web licences & program sets.' and a button for 'ERACS Web Access Security Solution Guide'.

The main content area features a search bar and a section titled 'Staff Off-Site'. Under this section, the following details are displayed:

- Company: RINA - Power Systems
- Calculation Modules: Loadflow, Fault, IEC909, Protection, Injection, Impedance, Transient, ArcFlash
- Program Size: 3000Bus
- Program Type: Time-Unlimited
- Usage Statistics: Show

Below these details is a table titled 'Web User Licences' with the following columns: Username, Password, Email, Access Level, Auto Unlock, Licence Locked To PC, Licence In Use, Date Last Used, and Action. The table contains four rows of user licenses.

Username	Password	Email	Access Level	Auto Unlock	Licence Locked To PC	Licence In Use	Date Last Used	Action
[Redacted]	[Redacted]	[Redacted]	User	Yes <input checked="" type="checkbox"/>	Yes	Lost Connection	13 Feb 2018	[Edit] [Delete]
[Redacted]	[Redacted]	[Redacted]	User	Yes <input checked="" type="checkbox"/>	No	No	11 May 2017	[Edit] [Delete]
[Redacted]	[Redacted]	[Redacted]	Supervisor	Yes <input checked="" type="checkbox"/>	No	No	10 Jan 2018	[Edit] [Delete]
[Redacted]	[Redacted]	[Redacted]	Supervisor	Yes <input checked="" type="checkbox"/>	No	No	12 Feb 2018	[Edit] [Delete]

Figure 6: EWAM Program Sets page

4.4 Viewing Web User Licences

The Program Sets page shows the program sets and associated Web User Licences available to your company, as in Figure 6. A *program set* is a collection of ERACS feature information common to a number of Web User Licences. A Web User Licence can only be associated with one program set.

The details of each program set precede the table of Web User Licences which belong to it.

Web Program Information - This section contains read-only information about the program set the licences are associated with and includes: a description as the heading, the company the program set belongs to, the available ERACS calculation modules, the maximum number of busbars which can be added to an ERACS single-line diagram, whether the program set is time-locked (together with corresponding program set start and end dates) or time-unlimited.

The details of each Web User Licence will be displayed in a single row of a table comprising the following columns:

Username - This column displays the username which is used in the ERACS Login window (Figure 3) and is editable in EWAM.

Password - This column displays the password which is used in the ERACS Login window (Figure 3) and is editable in EWAM.

Email - This column displays the email which is associated with this account and is editable in EWAM.

Access Level - This column displays the access level which dictates the facilities and level of control available to a user within ERACS. Access Level is editable in EWAM and can be set to: Supervisor, Operator, User, Student or None (see the ERACS User Guide for a description of the Access Level).

Date Start - This column displays the *date from* which this licence can be used to access ERACS, but is only displayed if the associated program set is time-locked. If no Start Date has been entered for the particular licence, the start date of the program set will be checked instead when a user logs into ERACS.

Date End - This column displays the *date until* which this licence can be used to access ERACS, but is only displayed if the associated program set is time-locked. If no End Date has been entered for the particular licence, the end date of the program set will be checked instead when a user logs into ERACS.

Auto Unlock - This column indicates whether the licence will be automatically unlocked from a computer when a user closes ERACS.

Licence Locked To PC - This column indicates whether the licence is currently locked to a particular computer.

Licence In Use - This column indicates whether the licence is currently being used within ERACS. A value of "Lost Connection" is displayed when communication has abnormally ceased between ERACS and the ERACS Web Server.

Date Last Used - This column displays the date and exact time that ERACS last communicated with the ERACS Web Server, for the particular licence. Hover over the date to see the time portion as well.

Action - This column comprises two clickable icons. If the licence is not in use, it may be unlocked from a particular computer by clicking the *padlock* icon. The licence details may be edited by clicking the *pencil* icon. In the final row of the table, all not-in-use licences (corresponding to one program set) may be unlocked by clicking the corresponding *padlock* icon. See the subsequent sections for further details of these actions.

4.5 Editing a Web User Licence

To edit a Web User Licence, click the *pencil* icon in the Action column of the Web User Licences table. This will unlock the row for editing, as in Figure 7.

- Two new icons will be displayed; clicking the first icon (green) confirms changes to any edited information, clicking the second icon (orange) cancels any changes made and returns the row to a read-only state.
- This row contains editable information about the Web User Licence itself and comprises form controls for editing username, password, email, access level, licence start date (optional), licence end date (optional) and auto unlock.

Ticking "Auto Unlock" will ensure that (a) the licence is automatically unlocked from a computer when a user closes ERACS, or (b) the licence can be reused on another computer if ERACS does not close normally and communication abnormally ceases between ERACS and the ERACS Web Server (i.e. "Lost Connection" is displayed in the "Licence in Use" column of the Web User Licences table).





Email	Access Level	Auto Unlock	Licence Locked To PC	Licence In Use	Date Last Used	Action
<input type="text" value="john.parker@eracs.com"/>	User	Yes <input checked="" type="checkbox"/>	Yes	Lost Connection	13 Feb 2018	 
<input type="text" value="jane.doe@eracs.com"/>	User	Yes <input checked="" type="checkbox"/>	No	No	11 May 2017	 

Figure 7: Editing a Web User Licence account

4.6 Unlocking an individual Web User Licence

A Web User Licence is unlocked by clicking the *padlock* icon in the Action column of the same table row, as in Figure 8. The licence may then be used to log into ERACS from a different computer on which ERACS is installed.

If the "Licence In Use" column is displaying "Yes" for a particular Web User Licence, the *padlock* icon will not be displayed in that row (as in the third table row of Figure 8). Therefore, it will not be possible to unlock such a licence, as unlocking will disrupt the active user's ERACS session.

If, for a particular Web User Licence, communication between ERACS and the ERACS Web Server has abnormally ceased, the "Licence In Use" column will display "Lost Connection" after a defined period of time and the licence may be unlocked via the displayed *padlock* icon, highlighted in the second table row of Figure 8.






Auto Unlock	Licence Locked To PC	Licence In Use	Date Last Used	Action
No <input type="checkbox"/>	Yes	No	09 Aug 2018	 
Yes <input checked="" type="checkbox"/>	Yes	Lost Connection	09 Aug 2018	 
Yes <input checked="" type="checkbox"/>	Yes	Yes	09 Aug 2018	

Figure 8: Unlock a Web User Licence option

4.7 Unlocking all Web User Licences

All not-in-use licences may be unlocked via the Web User Licences table, by clicking the *padlock* icon in the Action column of the *final row* of the table, as in Figure 9. The licences may then be used to log into ERACS from different computers on which ERACS is installed.

▼	Yes <input checked="" type="checkbox"/>	No	No	13 Sep 2017	 
▼	Yes <input checked="" type="checkbox"/>	No	No	26 Oct 2017	 
				Unlock All Web User Licences	

Figure 9: Unlock All Web User Licences option

4.8 Viewing Usage Statistics







Each program set has a set of usage statistics associated with it, which can be displayed by clicking the "Show" link adjacent to the Usage Statistics caption.

These statistics allow you to see the times and durations of the usage of individual licenses. They also provide a means of seeing where conflicts (when someone tries to use a license which is already in use elsewhere) have occurred.

You can choose to view all time usage statistics or drill down to more recent data. Completed ERACS sessions are marked in blue, currently active ERACS sessions in green and conflicts in red. Hover over a block and you'll be presented with a greater level of detail.

Staff Off-Site

Company: RINA - Power Systems

Calculation Modules:  Loadflow  Fault  IEC909  Protection  Injection  Impedance  Transient  ArcFlash

Program Size: 3000Bus

Program Type: Time-Unlimited

Usage Statistics: [Hide](#)

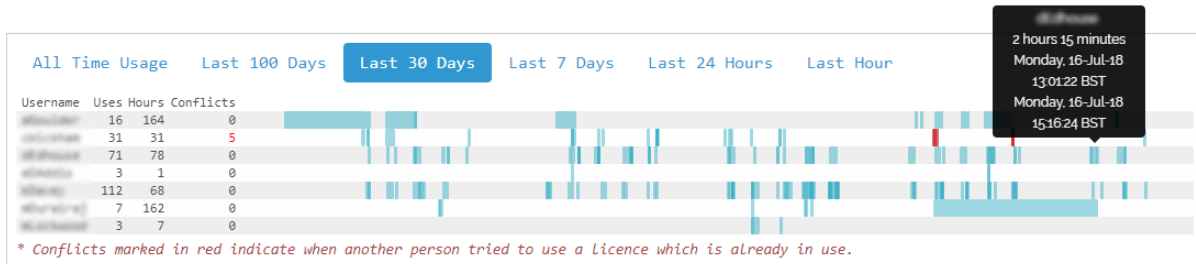


Figure 11: Viewing the Last 30 Days of ERACS usage